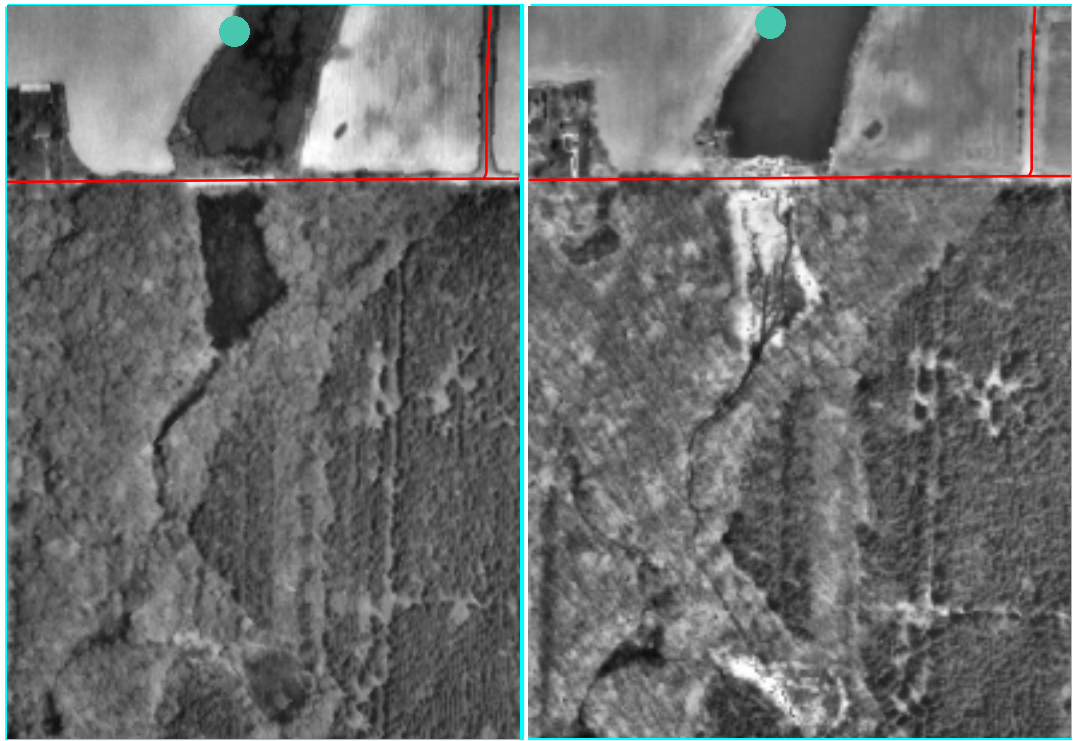
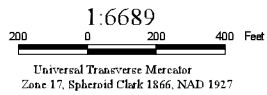


### Area of detail







4-29-85

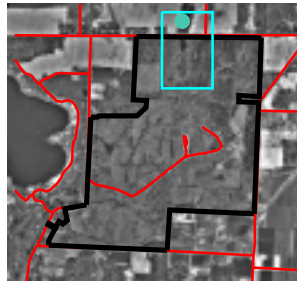


4-16-95

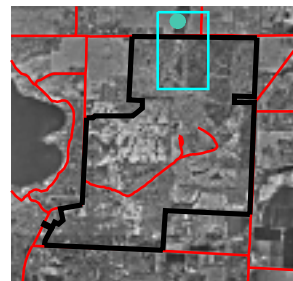
Changes in the shallow marsh wetland on the north boundary of QHSP from 1985 (left) to 1995 (right)

The shallow marsh wetland is habitat for the endangered plant species *Potamogeton spirillus*

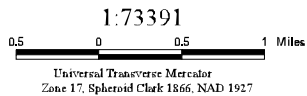
-  SPIRAL PONDWEED (*Potamogeton spirillus*)
-  Quail Hollow State Park
-  Roads
-  Area of detail



4-29-85



4-16-95



Quail Hollow SP Thesis Project  
Ralph D. Wagnitz  
Department of Geography  
Kent State University

Map 7. QHSP photo comparison of wetland habitat